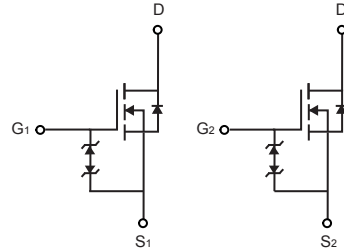


N-Channel Enhancement Mode Field Effect Transistor

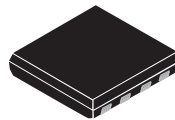
PRELIMINARY

FEATURES

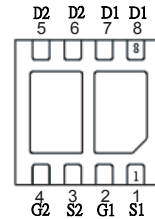
- 20V, 36A, $R_{DS(ON)} = 9m\Omega @V_{GS} = 4.5V$.
 $R_{DS(ON)} = 12m\Omega @V_{GS} = 2.5V$.
 $R_{DS(ON)} = 16m\Omega @V_{GS} = 1.8V$.
- Super High dense cell design for extremely low $R_{DS(ON)}$.
- High power and current handing capability.
- Lead-free plating ; RoHS compliant.
- ESD Protected: 2000 V.



*Typical value by design



DFN3*3



ABSOLUTE MAXIMUM RATINGS $T_A = 25^\circ C$ unless otherwise noted

Parameter	Symbol	Limit	Units
Drain-Source Voltage	V_{DS}	20	V
Gate-Source Voltage	V_{GS}	± 8	V
Drain Current-Continuous	$I_D @ R_{\theta Jc}$	36	A
	$I_D @ R_{\theta JA}$	14	A
Drain Current-Pulsed ^a	$I_{DM} @ R_{\theta Jc}$	144	A
	$I_{DM} @ R_{\theta JA}$	56	A
Maximum Power Dissipation	P_D	17.8	W
Operating and Store Temperature Range	T_J, T_{stg}	-55 to 150	$^\circ C$

Thermal Characteristics

Parameter	Symbol	Limit	Units
Thermal Resistance, Junction-to-Case ^b	$R_{\theta Jc}$	7	$^\circ C/W$
Thermal Resistance, Junction-to-Ambient ^b	$R_{\theta JA}$	50	$^\circ C/W$

Electrical Characteristics $T_C = 25^\circ\text{C}$ unless otherwise noted

Parameter	Symbol	Test Condition	Min	Typ	Max	Units
Off Characteristics						
Drain-Source Breakdown Voltage	BV_{DSS}	$V_{GS} = 0V, I_D = 250\mu A$	20			V
Zero Gate Voltage Drain Current	I_{DSS}	$V_{DS} = 20V, V_{GS} = 0V$			1	μA
Gate Body Leakage Current, Forward	I_{GSSF}	$V_{GS} = 8V, V_{DS} = 0V$			10	μA
Gate Body Leakage Current, Reverse	I_{GSSR}	$V_{GS} = -8V, V_{DS} = 0V$			-10	μA
On Characteristics^b						
Gate Threshold Voltage	$V_{GS(th)}$	$V_{GS} = V_{DS}, I_D = 250\mu A$	0.35		1	V
Static Drain-Source On-Resistance	$R_{DS(on)}$	$V_{GS} = 4.5V, I_D = 3A$		7	9	$m\Omega$
		$V_{GS} = 2.5V, I_D = 3A$		9	12	$m\Omega$
		$V_{GS} = 1.8V, I_D = 3A$		11	16	$m\Omega$
Dynamic Characteristics^c						
Input Capacitance	C_{iss}	$V_{DS} = 10V, V_{GS} = 0V, f = 1.0\text{ MHz}$		2495		pF
Output Capacitance	C_{oss}			275		pF
Reverse Transfer Capacitance	C_{rss}			220		pF
Switching Characteristics^c						
Turn-On Delay Time	$t_{d(on)}$	$V_{DD} = 16V, I_D = 6A, V_{GS} = 4.5V, R_{GEN} = 6\Omega$		28		ns
Turn-On Rise Time	t_r			16		ns
Turn-Off Delay Time	$t_{d(off)}$			80		ns
Turn-Off Fall Time	t_f			15		ns
Total Gate Charge	Q_g	$V_{DS} = 16V, I_D = 12A, V_{GS} = 4.5V$		24		nC
Gate-Source Charge	Q_{gs}			4		nC
Gate-Drain Charge	Q_{gd}			5		nC
Drain-Source Diode Characteristics and Maximum Ratings						
Drain-Source Diode Forward Current	I_S				14	A
Drain-Source Diode Forward Voltage ^b	V_{SD}	$V_{GS} = 0V, I_S = 14A$			1.2	V
Notes : □ a.Repetitive Rating : Pulse width limited by maximum junction temperature b.Pulse Test : Pulse Width $\leq 300\mu s$, Duty Cycle $\leq 2\%$. □ c.Guaranteed by design, not subject to production testing. □						

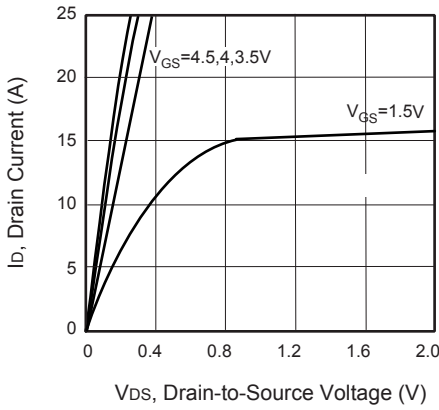


Figure 1. Output Characteristics

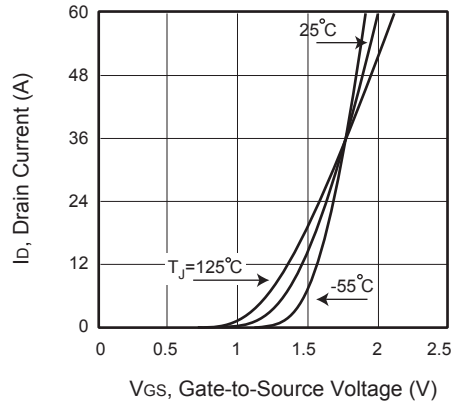


Figure 2. Transfer Characteristics

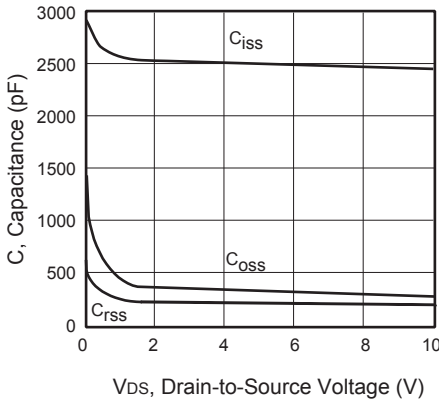


Figure 3. Capacitance

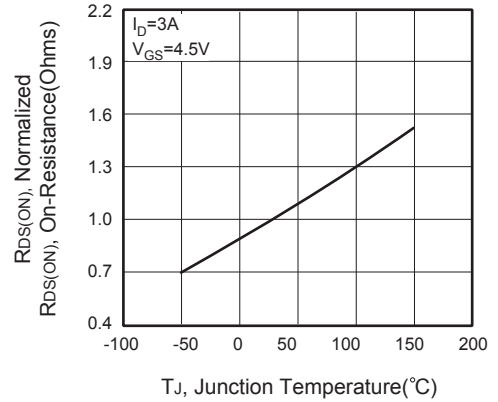


Figure 4. On-Resistance Variation with Temperature

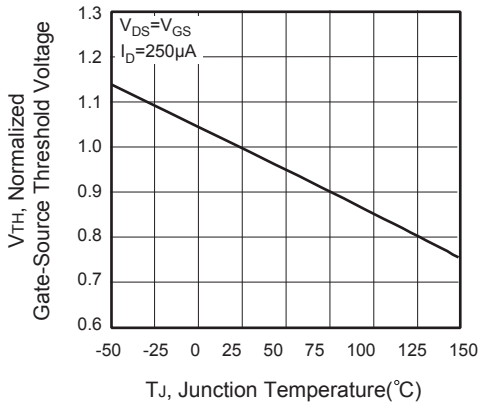


Figure 5. Gate Threshold Variation with Temperature

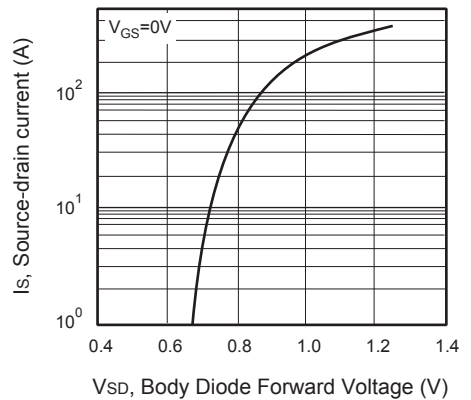


Figure 6. Body Diode Forward Voltage Variation with Source Current

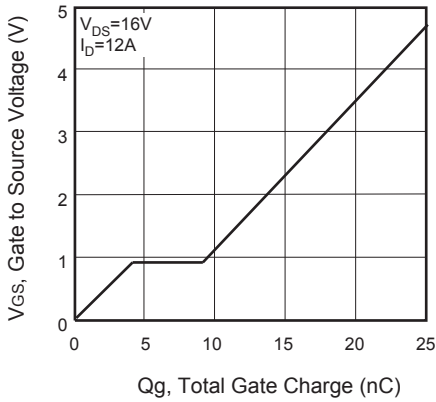


Figure 7. Gate Charge

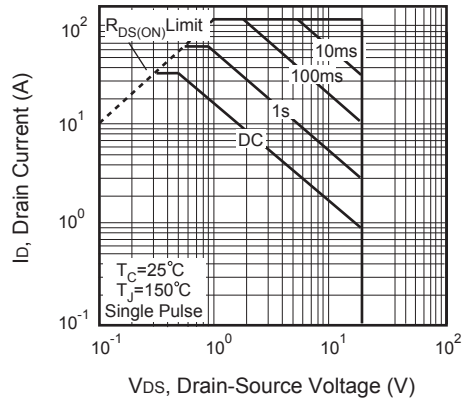


Figure 8. Maximum Safe Operating Area

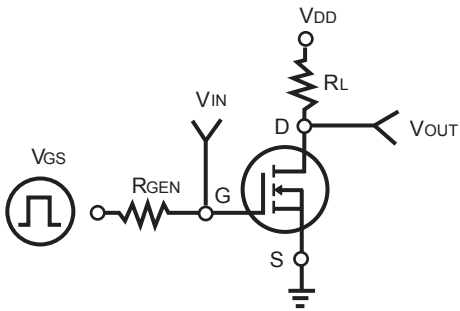


Figure 9. Switching Test Circuit



Figure 10. Switching Waveforms

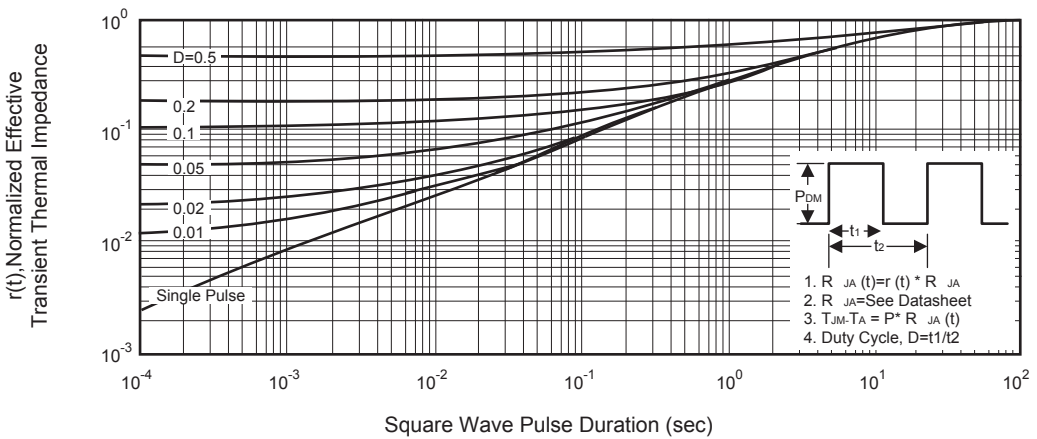


Figure 10. Normalized Thermal Transient Impedance Curve