

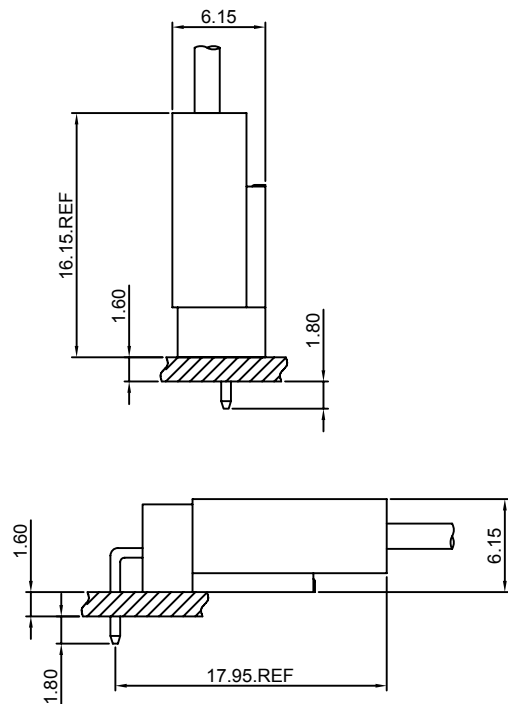
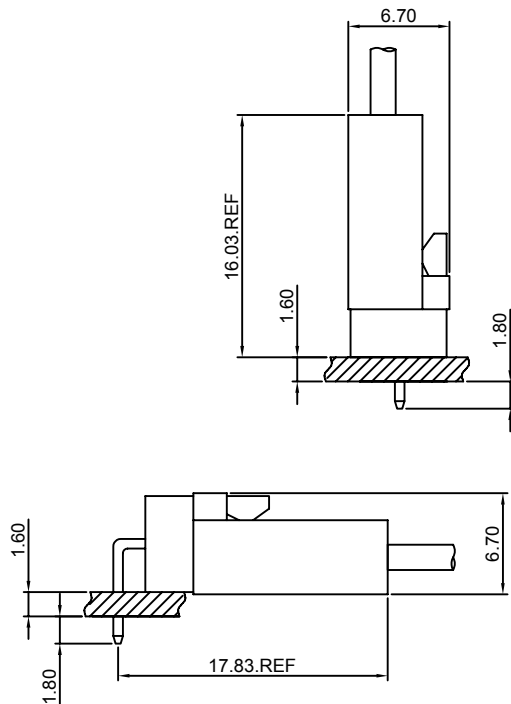
## Specifications

- Current rating:4A AC,DC
- Voltage rating:250V AC,DC
- Temperature range:-40°C~+105°C
- Contact resistance:10mΩMax.
- Insulation resistance:1000MΩMin.
- Withstanding voltage:1000V AC/minute
- \*Compliant with RoHS and REACH\*
- \*Meet the HF/Halogen Free,need to customize\*
- \*Contact CJT for details\*

## Standards



## Assembly layout

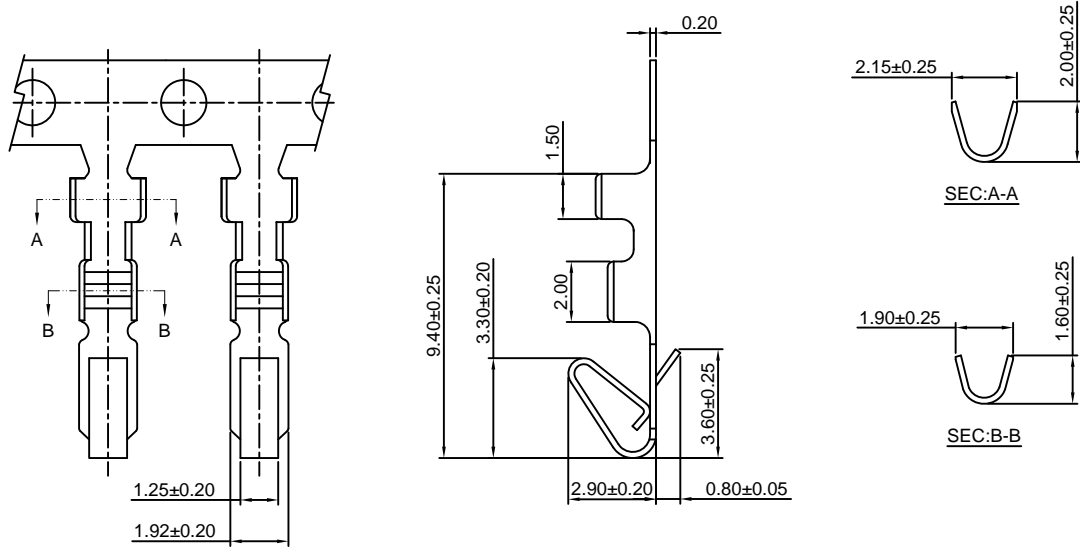


### A2543-T

2.54mm Pitch Crimp Terminal

**Reference Informations:**

\*Used in CJT A2543H-XP,A2543HA,HB-XP-WH,A2543HC-4P,C2504AH-XP series Housing



**Ordering information & Specifications:**

Unit:mm

| Part NO. | Wire Range | Insulation O.D. | Material        | Finish           | Qty/reel   |
|----------|------------|-----------------|-----------------|------------------|------------|
| A2543-TB | AWG#22-#28 | 1.90mm(max)     | Brass           | Tin over Nickel  | 10,000 PCS |
| A2543-TP | AWG#22-#28 | 1.90mm(max)     | Phosphor Bronze | Tin over Nickel  | 10,000 PCS |
| A2543-GB | AWG#22-#28 | 1.90mm(max)     | Brass           | Gold over Nickel | 10,000 PCS |
| A2543-GP | AWG#22-#28 | 1.90mm(max)     | Phosphor Bronze | Gold over Nickel | 10,000 PCS |

Optional Gold plating available but MOQ requested

### A2543H-XP

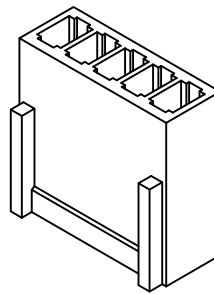
2.54mm Pitch Housing

**Reference Informations:**

- \*Material:Nylon 66,UL94V-0
- \*Suitable CJT A2543-T series Terminal
- \*Mates with CJT A2543WV,WR-XP,A2543WR-XP-L, A2543WR-S-XP series Wafer
- \*Color:Beige or White

**Ordering Information:**  
A2543H-XP - \* - \*\*\*  
1 2 3

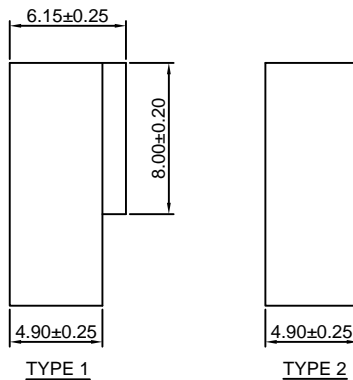
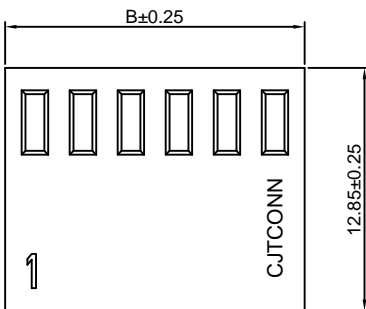
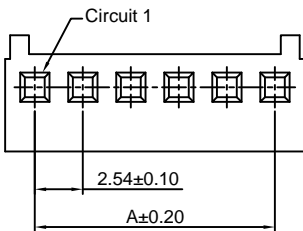
- 1.Part No.
- 2.Style:  
(blank) :Type 1/Beige  
2 :Type 2/White
- 3.Material:  
(Blank):Nylon 66,UL94V-0  
GWT:Nylon 66,UL94V-0,GWT 750 °C



**Ordering Information & Dimensions:**

| PART NO. | Dimensions |       |
|----------|------------|-------|
|          | A          | B     |
| 2P       | 2.54       | 5.68  |
| 3P       | 5.08       | 8.22  |
| 4P       | 7.62       | 10.76 |
| 5P       | 10.16      | 13.30 |
| 6P       | 12.70      | 15.84 |
| 7P       | 15.24      | 18.38 |
| 8P       | 17.78      | 20.92 |
| 9P       | 20.32      | 23.46 |
| 10P      | 22.86      | 26.00 |
| 11P      | 25.40      | 28.54 |
| 12P      | 27.94      | 31.08 |
| 13P      | 30.48      | 33.62 |
| 14P      | 33.02      | 36.16 |
| 15P      | 35.56      | 38.70 |
| 16P      | 38.10      | 41.24 |
| 17P      | 40.64      | 43.78 |
| 18P      | 43.18      | 46.32 |
| 19P      | 45.72      | 48.86 |
| 20P      | 48.26      | 51.40 |
| 21P      | 50.80      | 53.94 |
| 22P      | 53.34      | 56.48 |
| 23P      | 55.88      | 59.02 |
| 24P      | 58.42      | 61.56 |
| 25P      | 60.96      | 64.10 |

Unit: mm



### A2543HA-XP-WH

2.54mm Pitch Housing

**Reference Informations:**

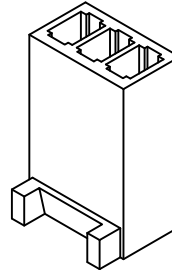
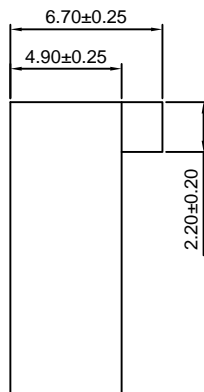
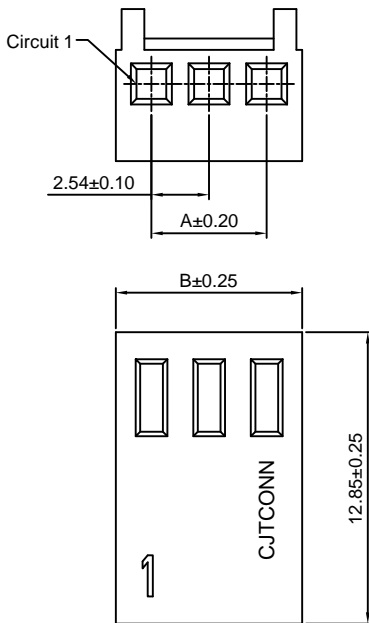
- \*Material:Nylon 66,UL94V-0
- \*Suitable CJT A2543-T series Terminal
- \*Mates with CJT A2543WVA,WRA-XP-WH, A2543WRD-XP,A2543WVB-S-XP, D2541WVA(-F)-XP,WRA-XP(-2) series Wafer
- \*Color: White

Ordering Information:  
A2543HA-XP-WH - \*\*\*  
 1 2  
 1.Part No.  
 2.Material:  
 (Blank):Nylon 66,UL94V-0  
 GWT:Nylon 66,UL94V-0,GWT 750 °C

**Ordering Information & Dimensions:**

| PART NO. | Dimensions |       |
|----------|------------|-------|
|          | A          | B     |
| 2P       | 2.54       | 5.68  |
| 3P       | 5.08       | 8.22  |
| 4P       | 7.62       | 10.76 |
| 5P       | 10.16      | 13.30 |
| 6P       | 12.70      | 15.84 |
| 7P       | 15.24      | 18.38 |
| 8P       | 17.78      | 20.92 |
| 9P       | 20.32      | 23.46 |
| 10P      | 22.86      | 26.00 |
| 11P      | 25.40      | 28.54 |
| 12P      | 27.94      | 31.08 |
| 13P      | 30.48      | 33.62 |
| 14P      | 33.02      | 36.16 |
| 15P      | 35.56      | 38.70 |
| 16P      | 38.10      | 41.24 |
| 17P      | 40.64      | 43.78 |
| 18P      | 43.18      | 46.32 |
| 19P      | 45.72      | 48.86 |
| 20P      | 48.26      | 51.40 |
| 21P      | 50.80      | 53.94 |
| 22P      | 53.34      | 56.48 |
| 23P      | 55.88      | 59.02 |
| 24P      | 58.42      | 61.56 |
| 25P      | 60.96      | 64.10 |

Unit: mm



### A2543HB-XP-WH

2.54mm Pitch Housing

**Reference Informations:**

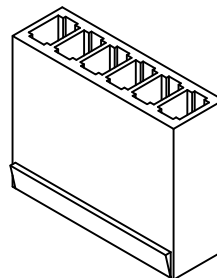
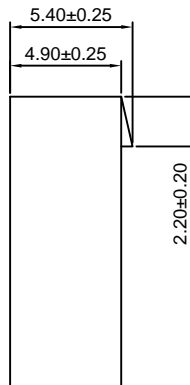
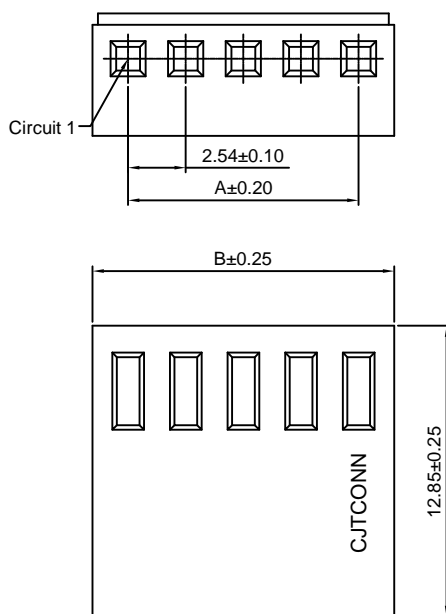
- \*Material:Nylon 66,UL94V-0
- \*Suitable CJT A2543-T series Terminal
- \*Mates with CJT A2543WVA,WRA-XP-WH, A2543WRD-XP,A2543WVB-S-XP , D2541WVA(-F)-XP,WRA-XP(-2) series Wafer
- \*Color:White

Ordering Information:  
A2543HB-XP-WH - \*\*\*  
 1 2  
 1.Part No.  
 2.Material:  
 (Blank):Nylon 66,UL94V-0  
 GWT:Nylon 66,UL94V-0,GWT 750 °C

**Ordering Information & Dimensions:**

| PART NO. | Dimensions |       |
|----------|------------|-------|
|          | A          | B     |
| 2P       | 2.54       | 5.68  |
| 3P       | 5.08       | 8.22  |
| 4P       | 7.62       | 10.76 |
| 5P       | 10.16      | 13.30 |
| 6P       | 12.70      | 15.84 |
| 7P       | 15.24      | 18.38 |
| 8P       | 17.78      | 20.92 |
| 9P       | 20.32      | 23.46 |
| 10P      | 22.86      | 26.00 |
| 11P      | 25.40      | 28.54 |
| 12P      | 27.94      | 31.08 |
| 13P      | 30.48      | 33.62 |
| 14P      | 33.02      | 36.16 |
| 15P      | 35.56      | 38.70 |
| 16P      | 38.10      | 41.24 |
| 17P      | 40.64      | 43.78 |
| 18P      | 43.18      | 46.32 |
| 19P      | 45.72      | 48.86 |
| 20P      | 48.26      | 51.40 |
| 21P      | 50.80      | 53.94 |
| 22P      | 53.34      | 56.48 |
| 23P      | 55.88      | 59.02 |
| 24P      | 58.42      | 61.56 |
| 25P      | 60.96      | 64.10 |

Unit: mm





# A2543 SERIES

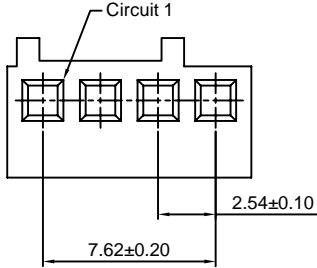
2.54mm pitch wire to board connector

## A2543HC-4P

2.54mm Pitch Housing

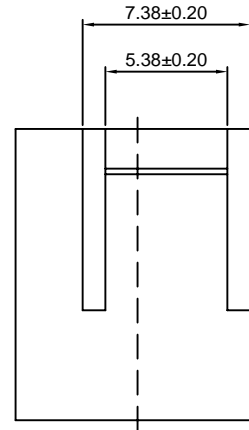
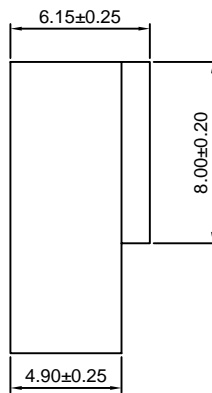
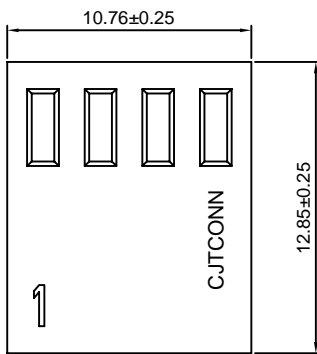
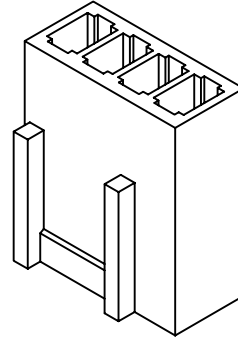
**Reference Informations:**

- \*Material:Nylon 66,UL94V-0
- \*Suitable CJT A2543-T series Terminal
- \*Mates with CJT A2543WVC-4P series Wafer
- \*Color:Beige



**Ordering Information:**

- A2543H-4P - \*\*\*  
 1 2
- 1.Part No.
  - 2.Material:  
 (Blank):Nylon 66,UL94V-0  
 GWT:Nylon 66,UL94V-0,GWT 750 °C



Unit: mm

## A2543WV-XP

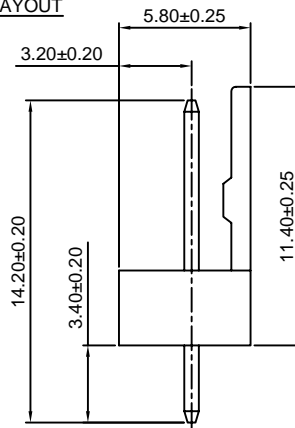
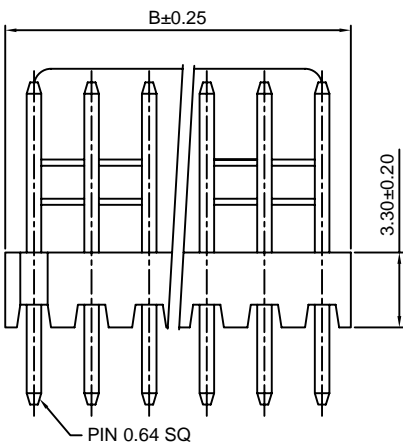
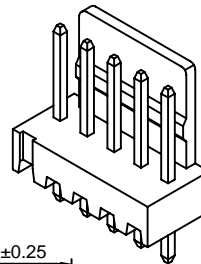
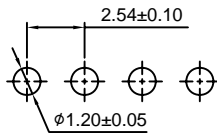
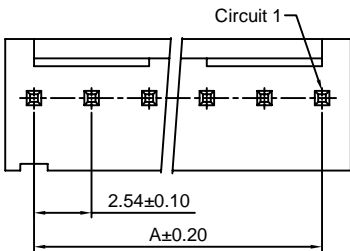
2.54mm pitch 180° Wafer

**Reference Informations:**

- \*Material:Pin:Brass/Tin over Nickel  
 Insulator:Nylon 66,UL94V-0
- \*Mates with CJT A2543H-XP series Housing
- \*Color:Beige

**Ordering Information:**

- A2543WV-XP - \*\*\* - \*\*  
 1 2 3
- 1.Part No.
  - 2.Material:  
 (Blank):Nylon 66,UL94V-0  
 GWT:Nylon 66,UL94V-0,GWT 750 °C
  - 3.Finish:  
 (blank):Tin over Nickel  
 G:Gold over Nickel



**Ordering Information & Dimensions:**

| PART NO. | Dimensions |       |
|----------|------------|-------|
|          | A          | B     |
| 2P       | 2.54       | 5.08  |
| 3P       | 5.08       | 7.62  |
| 4P       | 7.62       | 10.16 |
| 5P       | 10.16      | 12.70 |
| 6P       | 12.70      | 15.24 |
| 7P       | 15.24      | 17.78 |
| 8P       | 17.78      | 20.32 |
| 9P       | 20.32      | 22.86 |
| 10P      | 22.86      | 25.40 |
| 11P      | 25.40      | 27.94 |
| 12P      | 27.94      | 30.48 |
| 13P      | 30.48      | 33.02 |
| 14P      | 33.02      | 35.56 |
| 15P      | 35.56      | 38.10 |
| 16P      | 38.10      | 40.64 |
| 17P      | 40.64      | 43.18 |
| 18P      | 43.18      | 45.72 |
| 19P      | 45.72      | 48.26 |
| 20P      | 48.26      | 50.80 |
| 21P      | 50.80      | 53.34 |
| 22P      | 53.34      | 55.88 |
| 23P      | 55.88      | 58.42 |
| 24P      | 58.42      | 60.96 |
| 25P      | 60.96      | 63.50 |
| 26P      | 63.50      | 66.04 |
| 27P      | 66.04      | 68.58 |
| 28P      | 68.58      | 71.12 |

Unit: mm

### A2543WR-XP

2.54mm pitch 90° Wafer

**Reference Informations:**

- \*Material:Pin:Brass/Tin over Nickel  
Insulator:Nylon 66,UL94V-0
- \*Mates with CJT A2543H-XP series Housing
- \*Color:Beige

**Ordering Information:**

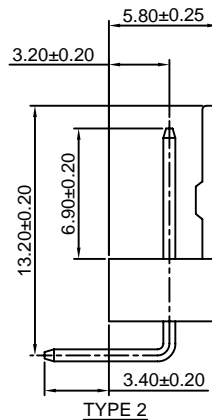
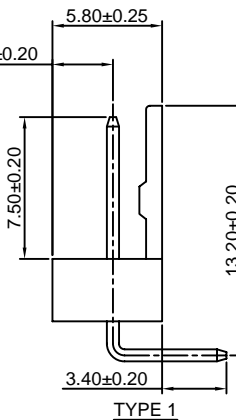
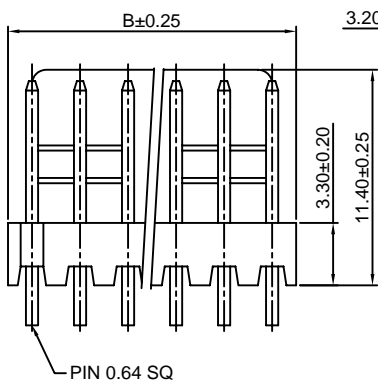
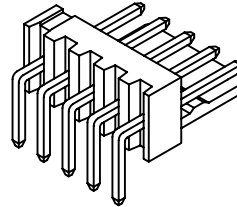
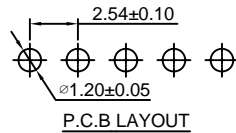
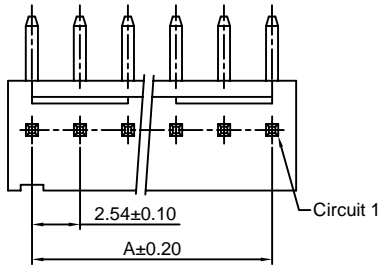
A2543WR-XP - \* - \*\*\* - \*\*  
1 2 3 4

- 1.Part No.
- 2.Style:  
(blank) :Type 1  
2 :Type 2
- 3.Material:  
(Blank):Nylon 66,UL94V-0  
GWT:Nylon 66,UL94V-0,GWT 750°C
- 4.Finish:  
(blank):Tin over Nickel  
G:Gold over Nickel

**Ordering Information & Dimensions:**

| PART NO. | Dimensions |       |
|----------|------------|-------|
|          | A          | B     |
| 2P       | 2.54       | 5.08  |
| 3P       | 5.08       | 7.62  |
| 4P       | 7.62       | 10.16 |
| 5P       | 10.16      | 12.70 |
| 6P       | 12.70      | 15.24 |
| 7P       | 15.24      | 17.78 |
| 8P       | 17.78      | 20.32 |
| 9P       | 20.32      | 22.86 |
| 10P      | 22.86      | 25.40 |
| 11P      | 25.40      | 27.94 |
| 12P      | 27.94      | 30.48 |
| 13P      | 30.48      | 33.02 |
| 14P      | 33.02      | 35.56 |
| 15P      | 35.56      | 38.10 |
| 16P      | 38.10      | 40.64 |
| 17P      | 40.64      | 43.18 |
| 18P      | 43.18      | 45.72 |
| 19P      | 45.72      | 48.26 |
| 20P      | 48.26      | 50.80 |
| 21P      | 50.80      | 53.34 |
| 22P      | 53.34      | 55.88 |
| 23P      | 55.88      | 58.42 |
| 24P      | 58.42      | 60.96 |
| 25P      | 60.96      | 63.50 |
| 26P      | 63.50      | 66.04 |
| 27P      | 66.04      | 68.58 |
| 28P      | 68.58      | 71.12 |

Unit: mm



### A2543WR-XP-L

2.54mm pitch 90° Wafer

**Reference Informations:**

- \*Material:Pin:Brass/Tin over Nickel  
Insulator:Nylon 66,UL94V-0
- \*Mates with CJT A2543H-XP series Housing
- \*Color:Beige

**Ordering Information:**

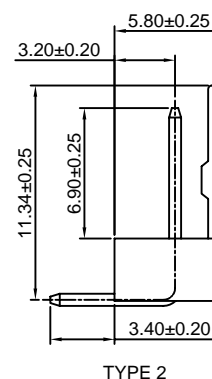
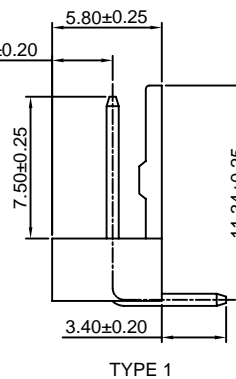
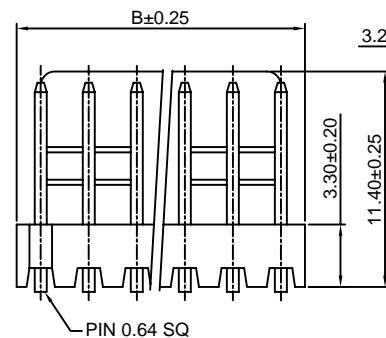
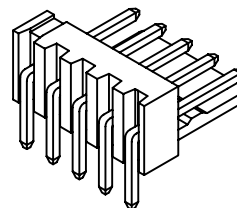
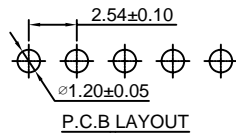
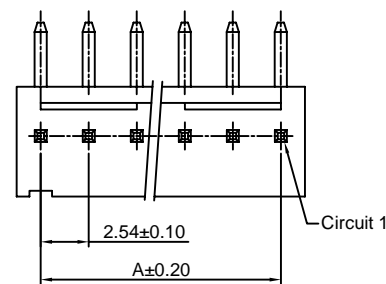
A2543WR-XP-L - \* - \*\*\* - \*\*  
1 2 3 4

- 1.Part No.
- 2.Style:  
(blank) :Type 1  
2 :Type 2
- 3.Material:  
(Blank):Nylon 66,UL94V-0  
GWT:Nylon 66,UL94V-0,GWT 750°C
- 4.Finish:  
(blank):Tin over Nickel  
G:Gold over Nickel

**Ordering Information & Dimensions:**

| PART NO. | Dimensions |       |
|----------|------------|-------|
|          | A          | B     |
| 2P       | 2.54       | 5.08  |
| 3P       | 5.08       | 7.62  |
| 4P       | 7.62       | 10.16 |
| 5P       | 10.16      | 12.70 |
| 6P       | 12.70      | 15.24 |
| 7P       | 15.24      | 17.78 |
| 8P       | 17.78      | 20.32 |
| 9P       | 20.32      | 22.86 |
| 10P      | 22.86      | 25.40 |
| 11P      | 25.40      | 27.94 |
| 12P      | 27.94      | 30.48 |
| 13P      | 30.48      | 33.02 |
| 14P      | 33.02      | 35.56 |
| 15P      | 35.56      | 38.10 |
| 16P      | 38.10      | 40.64 |
| 17P      | 40.64      | 43.18 |
| 18P      | 43.18      | 45.72 |
| 19P      | 45.72      | 48.26 |
| 20P      | 48.26      | 50.80 |
| 21P      | 50.80      | 53.34 |
| 22P      | 53.34      | 55.88 |
| 23P      | 55.88      | 58.42 |
| 24P      | 58.42      | 60.96 |
| 25P      | 60.96      | 63.50 |
| 26P      | 63.50      | 66.04 |
| 27P      | 66.04      | 68.58 |
| 28P      | 68.58      | 71.12 |

Unit: mm



### A2543WVA-XP-WH

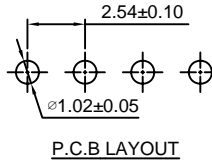
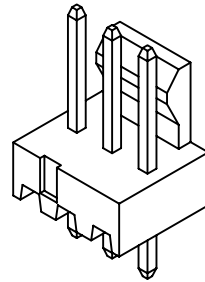
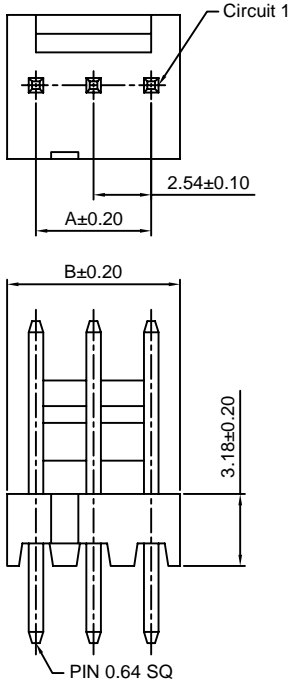
2.54mm pitch 180° Wafer

#### Reference Informations:

- \*Material: Pin: Brass/Tin over Nickel  
Insulator: Nylon 66, UL94V-0
- \*Mates with CJT A2543HA, HB-XP-WH series Housing
- \*Color: White

Ordering Information:  
A2543WVA-XP-WH - \*\*\* - \*\*  
1 2 3

1. Part No.
2. Material:  
(Blank): Nylon 66, UL94V-0  
GWT: Nylon 66, UL94V-0, GWT 750°C
3. Finish:  
(blank): Tin over Nickel  
G: Gold over Nickel



#### Ordering Information & Dimensions:

| PART NO. | Dimensions |       |
|----------|------------|-------|
|          | A          | B     |
| 2P       | 2.54       | 5.08  |
| 3P       | 5.08       | 7.62  |
| 4P       | 7.62       | 10.16 |
| 5P       | 10.16      | 12.70 |
| 6P       | 12.70      | 15.24 |
| 7P       | 15.24      | 17.78 |
| 8P       | 17.78      | 20.32 |
| 9P       | 20.32      | 22.86 |
| 10P      | 22.86      | 25.40 |
| 11P      | 25.40      | 27.94 |
| 12P      | 27.94      | 30.48 |
| 13P      | 30.48      | 33.02 |
| 14P      | 33.02      | 35.56 |
| 15P      | 35.56      | 38.10 |
| 16P      | 38.10      | 40.64 |
| 17P      | 40.64      | 43.18 |
| 18P      | 43.18      | 45.72 |
| 19P      | 45.72      | 48.26 |
| 20P      | 48.26      | 50.80 |
| 21P      | 50.80      | 53.34 |
| 22P      | 53.34      | 55.88 |
| 23P      | 55.88      | 58.42 |
| 24P      | 58.42      | 60.96 |
| 25P      | 60.96      | 63.50 |
| 26P      | 63.50      | 66.04 |
| 27P      | 66.04      | 68.58 |
| 28P      | 68.58      | 71.12 |

Unit: mm

### A2543WRA-XP-WH

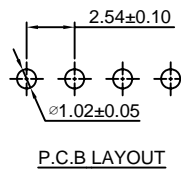
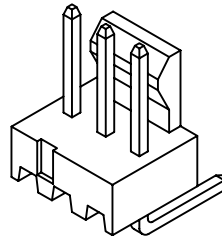
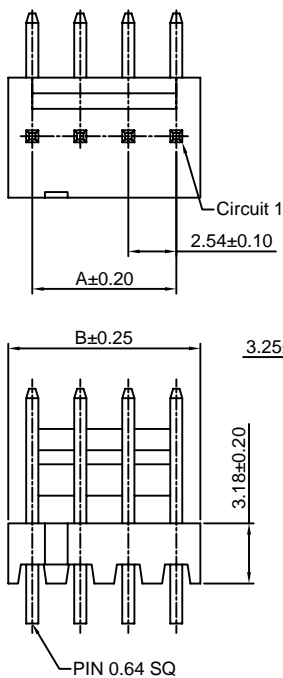
2.54mm Pitch 90° Wafer

#### Reference Informations:

- \*Material: Pin: Brass/Tin over Nickel  
Insulator: Nylon 66, UL94V-0
- \*Mates with CJT A2543HA, HB-XP-WH series Housing
- \*Color: White

Ordering Information:  
A2543WRA-XP-WH - \* - \*\*\* - \*\*  
1 2 3 4

1. Part No.
2. Style:  
(blank) : Type 1  
2 : Type 2
3. Material:  
(Blank): Nylon 66, UL94V-0  
GWT: Nylon 66, UL94V-0, GWT 750°C
4. Finish:  
(blank): Tin over Nickel  
G: Gold over Nickel



#### Ordering Information & Dimensions:

| PART NO. | Dimensions |       |
|----------|------------|-------|
|          | A          | B     |
| 2P       | 2.54       | 5.08  |
| 3P       | 5.08       | 7.62  |
| 4P       | 7.62       | 10.16 |
| 5P       | 10.16      | 12.70 |
| 6P       | 12.70      | 15.24 |
| 7P       | 15.24      | 17.78 |
| 8P       | 17.78      | 20.32 |
| 9P       | 20.32      | 22.86 |
| 10P      | 22.86      | 25.40 |
| 11P      | 25.40      | 27.94 |
| 12P      | 27.94      | 30.48 |
| 13P      | 30.48      | 33.02 |
| 14P      | 33.02      | 35.56 |
| 15P      | 35.56      | 38.10 |
| 16P      | 38.10      | 40.64 |
| 17P      | 40.64      | 43.18 |
| 18P      | 43.18      | 45.72 |
| 19P      | 45.72      | 48.26 |
| 20P      | 48.26      | 50.80 |
| 21P      | 50.80      | 53.34 |
| 22P      | 53.34      | 55.88 |
| 23P      | 55.88      | 58.42 |
| 24P      | 58.42      | 60.96 |
| 25P      | 60.96      | 63.50 |
| 26P      | 63.50      | 66.04 |
| 27P      | 66.04      | 68.58 |
| 28P      | 68.58      | 71.12 |

Unit: mm



# A2543 SERIES

2.54mm pitch wire to board connector

## A2543WVC-4P

2.54mm pitch 180° Wafer

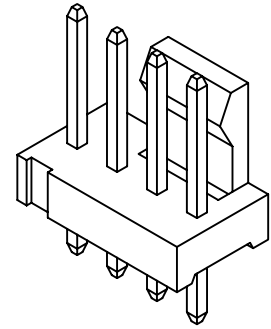
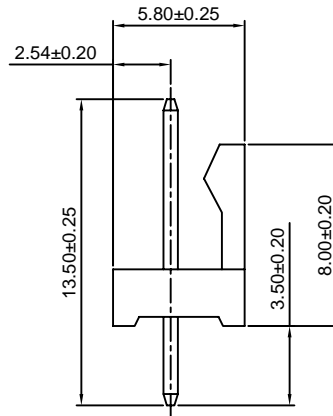
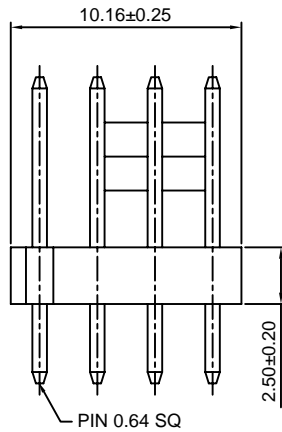
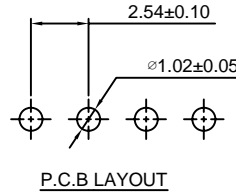
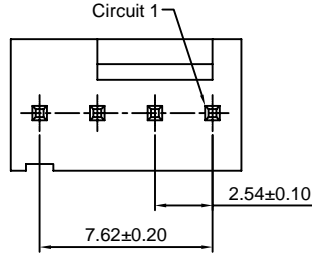
**Reference Informations:**

- \*Material: Pin: Brass/Tin over Nickel  
Insulator: Nylon 66, UL94V-0
- \*Mates with CJT A2543HC-4P series Housing
- \*Color: Beige

**Ordering Information:**

A2543WVC-4P - \*\*\* - \*\*  
1 2 3

1. Part No.
2. Material:  
(Blank): Nylon 66, UL94V-0  
GWT: Nylon 66, UL94V-0, GWT 750°C
3. Finish:  
(blank): Tin over Nickel  
G: Gold over Nickel



Unit: mm

## A2543WRD-XP

2.54mm Pitch 90° Wafer

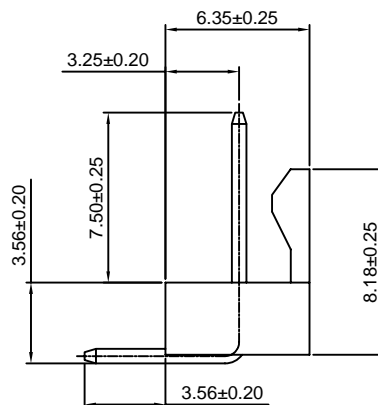
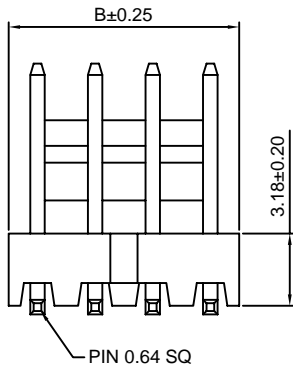
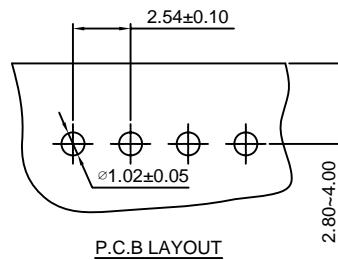
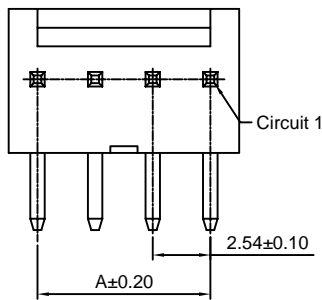
**Reference Informations:**

- \*Material: Pin: Brass/Tin over Nickel  
Insulator: Nylon 66, UL94V-0
- \*Mates with CJT A2543HA, HB-XP-WH series Housing
- \*Color: White

**Ordering Information:**

A2543WRD-XP - \*\*\* - \*\*  
1 2 3

1. Part No.
2. Material:  
(Blank): Nylon 66, UL94V-0  
GWT: Nylon 66, UL94V-0, GWT 750°C
3. Finish:  
(blank): Tin over Nickel  
G: Gold over Nickel



**Ordering Information & Dimensions:**

| PART NO. | Dimensions |       |
|----------|------------|-------|
|          | A          | B     |
| 2P       | 2.54       | 5.08  |
| 3P       | 5.08       | 7.62  |
| 4P       | 7.62       | 10.16 |
| 5P       | 10.16      | 12.70 |
| 6P       | 12.70      | 15.24 |
| 7P       | 15.24      | 17.78 |
| 8P       | 17.78      | 20.32 |
| 9P       | 20.32      | 22.86 |
| 10P      | 22.86      | 25.40 |
| 11P      | 25.40      | 27.94 |
| 12P      | 27.94      | 30.48 |
| 13P      | 30.48      | 33.02 |
| 14P      | 33.02      | 35.56 |
| 15P      | 35.56      | 38.10 |
| 16P      | 38.10      | 40.64 |
| 17P      | 40.64      | 43.18 |
| 18P      | 43.18      | 45.72 |
| 19P      | 45.72      | 48.26 |
| 20P      | 48.26      | 50.80 |

Unit: mm

### A2543WR-S-XP

2.54mm Pitch 90° Wafer - SMT TYPE

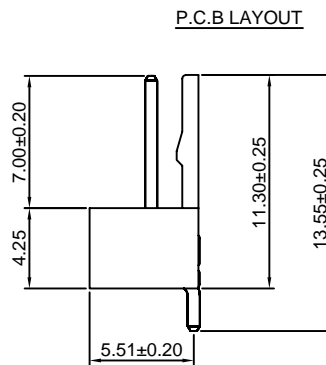
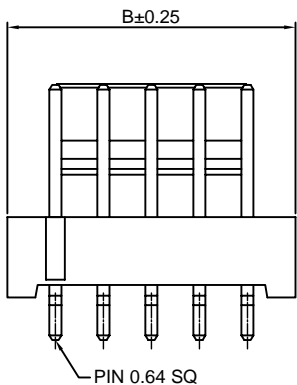
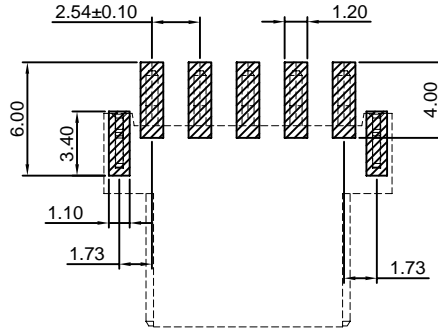
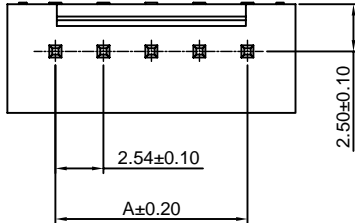
**Reference Informations:**

- \*Material:Pin:Brass/Tin over Nickel  
Insulator:Nylon 9T,UL94V-0
- \*Mates with CJT A2543H-XP series Housing
- \*Color:Natural

**Ordering Information:**

A2543WR-S-XP - \*\*\* - \*\*  
1 2 3

- Part No.
- Material:  
(Blank):Nylon 9T,UL94V-0  
GWT:Nylon 9T,UL94V-0,GWT 750 °C
- Finish:  
(blank):Tin over Nickel  
G:Gold over Nickel



**Ordering Information & Dimensions:**

| PART NO. | Dimensions |       |
|----------|------------|-------|
|          | A          | B     |
| 2P       | 2.54       | 7.62  |
| 4P       | 7.62       | 12.70 |
| 5P       | 10.16      | 15.24 |

Unit: mm

### A2543WVB-S-XP

2.54mm pitch 180° Wafer - SMT TYPE

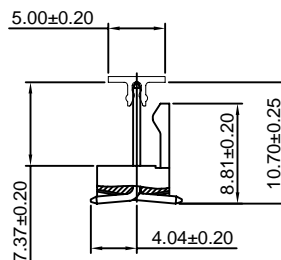
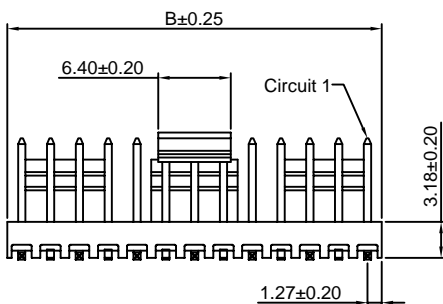
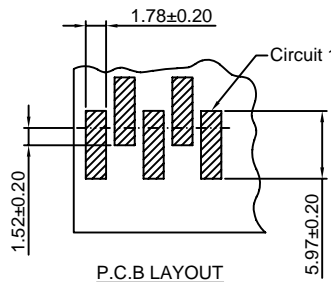
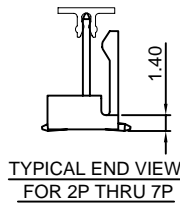
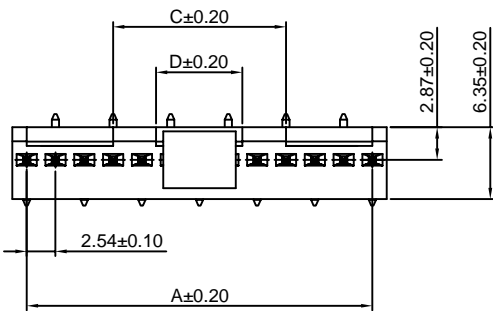
**Reference Informations:**

- \*Material:Pin:Brass/Tin over Nickel  
Insulator:LCP,UL94V-0
- \*Mates with CJT A2543HA,HB-XP-WH series Housing
- \*Color:Ivory

**Ordering Information:**

A2543WVB-S-XP - \*\*\* - \*\* - \*  
1 2 3 4

- Part No.
- Material:  
(Blank):LCP,UL94V-0  
GWT:LCP,UL94V-0,GWT 750 °C
- Color:  
(blank):Ivory  
BK:Black
- Finish:  
(blank):Tin over Nickel  
G:Gold over Nickel



**Ordering Information & Dimensions:**

| PART NO. | Dimensions |       |       |       |
|----------|------------|-------|-------|-------|
|          | A          | B     | C     | D     |
| 2P       | 2.54       | 5.08  | ----  | ----  |
| 3P       | 5.08       | 7.62  | ----  | ----  |
| 4P       | 7.62       | 10.16 | ----  | ----  |
| 5P       | 10.16      | 12.70 | ----  | ----  |
| 6P       | 12.70      | 15.24 | ----  | ----  |
| 7P       | 15.24      | 17.78 | ----  | ----  |
| 8P       | 17.78      | 20.32 | 2.54  | ----  |
| 9P       | 20.32      | 22.86 | 5.08  | ----  |
| 10P      | 22.86      | 25.40 | 7.62  | ----  |
| 11P      | 25.40      | 27.94 | 10.16 | ----  |
| 12P      | 27.94      | 30.48 | 12.70 | 7.62  |
| 13P      | 30.48      | 33.02 | 15.24 | 7.62  |
| 14P      | 33.02      | 35.56 | 17.78 | 12.70 |
| 15P      | 35.56      | 38.10 | 20.32 | 12.70 |
| 16P      | 38.10      | 40.64 | 22.86 | 12.70 |
| 17P      | 40.64      | 43.18 | 25.40 | 12.70 |
| 18P      | 43.18      | 45.72 | 27.94 | 12.70 |

Unit: mm