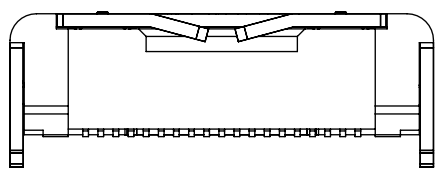
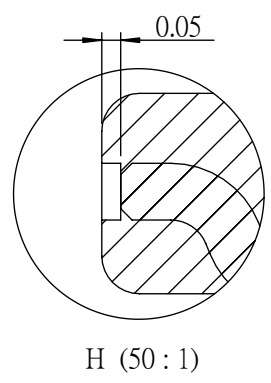
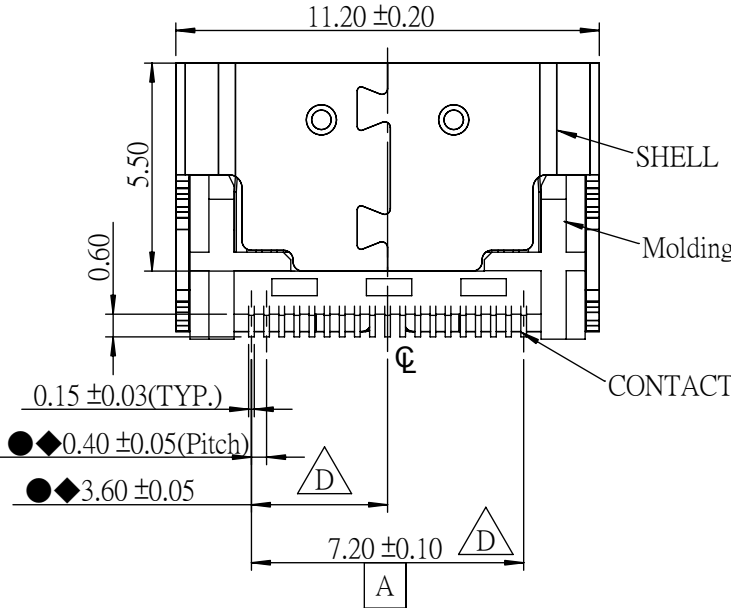
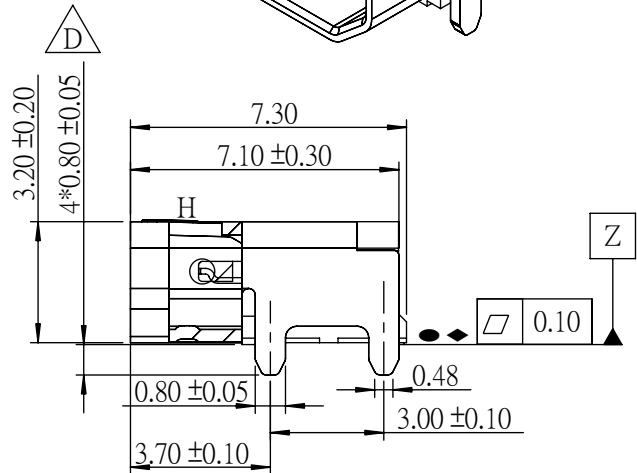
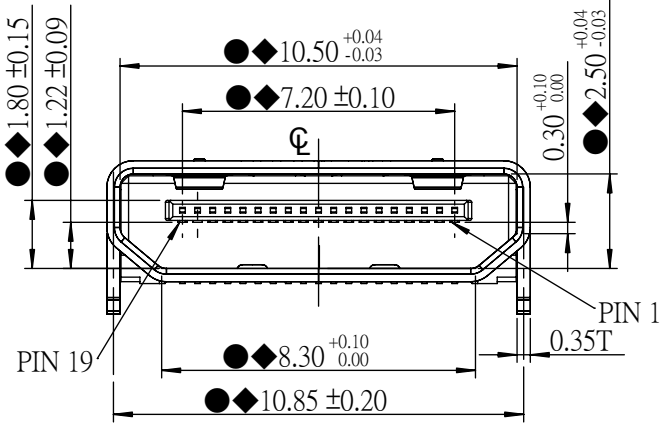
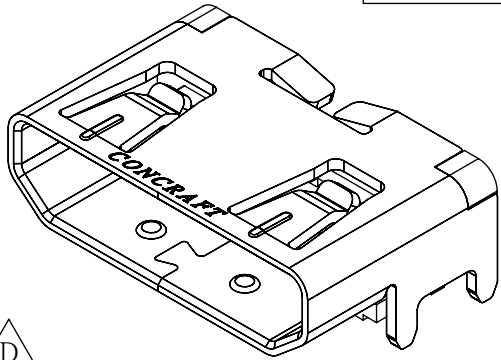
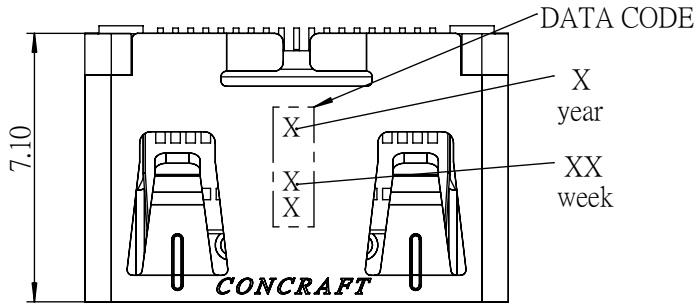
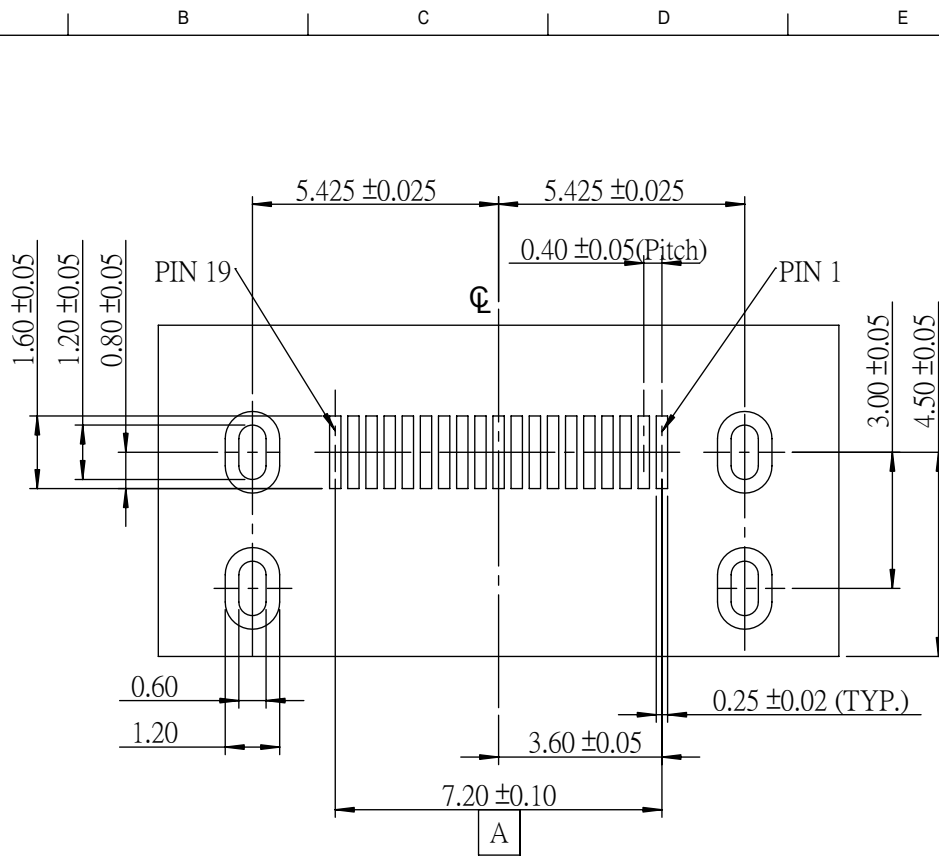


Halogen Free



D	E140198A	Alan.guo	04/21/2014	GENERAL TOLERANCE		DRAW:	PART NO: 128AA19AB□N
C	E130580A	Cookie	12/10/2013	X. ±0.30	X.° ±2.00°	CHECKED:	TITLE: HDMI C TYPE SMT
B	E120047A	Ken	2/13/2012	.X ±0.20	.X° ±1.00°		
A	E110272A	Marcy	2011/07/12	.XX ±0.10	.XX° ±0.50°	APPROVE:	DRAWING NO: 128AA19AB□N
REV.	ECO NO.	DRAW	DATE	UNITS: mm	DATE: 04/21/2014		
MATERIAL:		FINISH:	SCALE: 2.5 : 1	SHEET: 1 / 2	REV. D		



NOTE:

- SOLDERTAIL TO BE WITHIN 0.05 UPWARD AND 0.15 DOWNWARD FROM Z-DATUM PLACE, AND COPLANARITY OF SOLDERTAILS TO BE WITHIN 0.10 MEASUREMENT POINT SOLDERTAILS TIP

1. INSPECTION SYMBOL:

- : MANUFACTURER INSPECTION
- ◆ : Q.C INSPECTION

2. MATERIAL:

MOLDING: THERMOPLASTIC, COLOR: BLACK, UL-94V0
 SHELL: COPPER ALLOY, T=0.35 MM
 TERMINAL: COPPER ALLOY, T=0.15 MM

3. FINISH:

CONTACT: GOLD FLASH PLATE ON MATING SURFACE,
 GOLD FLASH PLATE ON SOLDERTAIL,
 ALL OVER NICKEL 50u" Min UNDER PLATE
 SHELL: ALL OVER NICKEL 50u" Min UNDER PLATE

4. HSF: HSF CONCRAFT LEVEL 1

128AA19AB□N

A=3u" Au
 B=10u" Au
 C=15u" Au
 D=30u" Au

D	E140198A	Alan.guo	04/21/2014	GENERAL TOLERANCE		DRAW:	PART NO: 128AA19AB□N
C	E130580A	Cookie	12/10/2013	X. ±0.30	X.° ± 2.00°	CHECKED:	TITLE: HDMI C TYPE SMT
B	E120047A	Ken	2/13/2012	.X ±0.20	.X° ± 1.00°		
A	E110272A	Marcy	2011/07/12	.XX ±0.10	.XX° ± 0.50°	APPROVE:	DRAWING NO: 128AA19AB□N
REV.	ECO NO.	DRAW.	DATE	UNITS: mm	DATE: 04/21/2014		
MATERIAL:	FINISH:	SCALE: 1/1	SHEET: 2/2	REV. D			