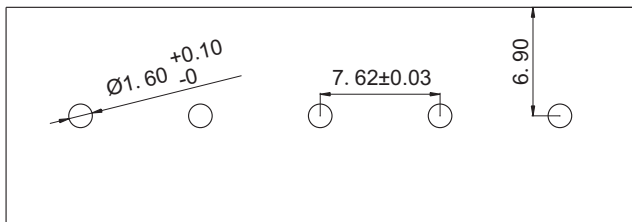




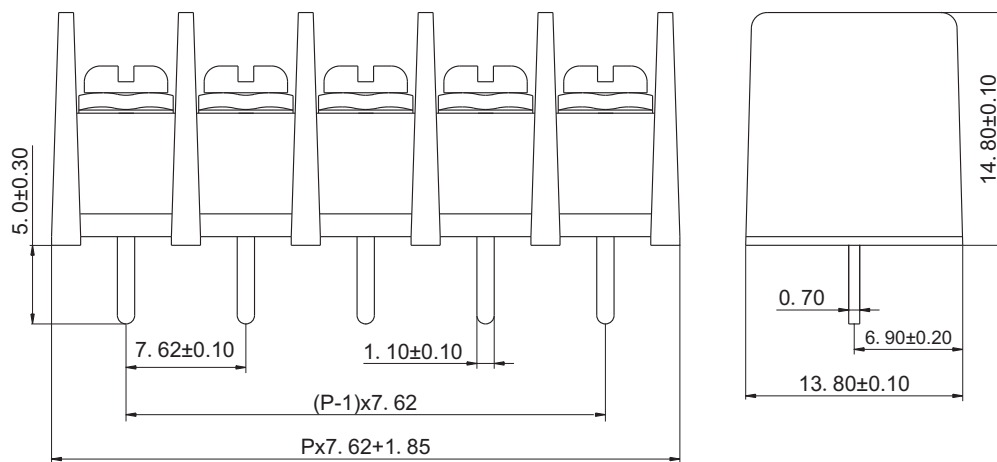
慈溪市科发电子有限公司

CIXI KEFA ELECTRONICS CO., LTD.

产品规格书



PCB Layout



linear dimension(Tolerances Standard GB/T 14486-2008)								—		
variable range	to 6	over 6 to 10	over 10 to 30	over 30 to 60	over 60 to 100	over 100 to 160	over 160 to	to 10	over 10 to 100	over 100 to
tolerance	±0.20	±0.30	±0.50	±0.70	±1.00	±1.30	±1.60	0.10	0.30	0.60

认证

电气性能

参考标准

额定电压

额定电流

使用线径

耐电压



UL

IEC

300V

250V

20A

24A

22-12 AWG

2.5mm²

AC2000V/1Min

机械性能

扭力距

温度范围

8.0Kg.cm

-40℃—+105℃

尺寸

间距

极数

7.62mm

2P-24P

材质及电镀

塑体

焊针

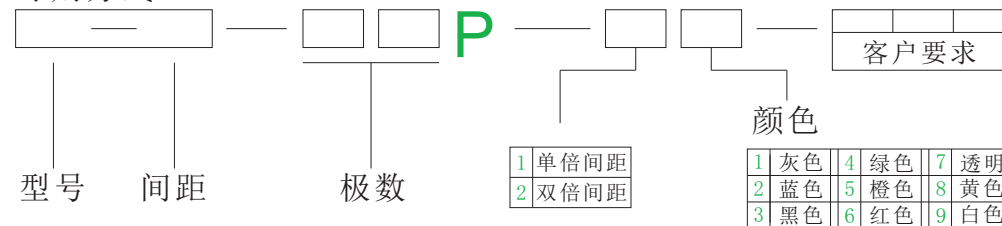
螺丝

PA66 UL94V-0

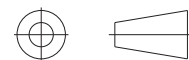
黄铜 镀锡

M3 钢 镀镍

订购方式:



慈溪市科发电子有限公司
CIXI KEFA ELECTRONICS CO., LTD.



THROANGIF PROJECTION

NAME

KF25C-7.62