



AB24S THRU AB220S

Voltage Range - 40 to 200 V olts Current - 2.0 Ampere

SINGLE PHASE GLASS PASSIVATED BRIDGE RECTIFIERS

Features

- ◆ Ideal for printed circuit board
- ◆ Reliable low cost construction utilizing molded plastic technique
- ◆ High temperature soldering guaranteed: 260°/10 seconds at 5 lbs., (2.3kg) tension
- ◆ Small size, simple installation
- ◆ High surge current capability



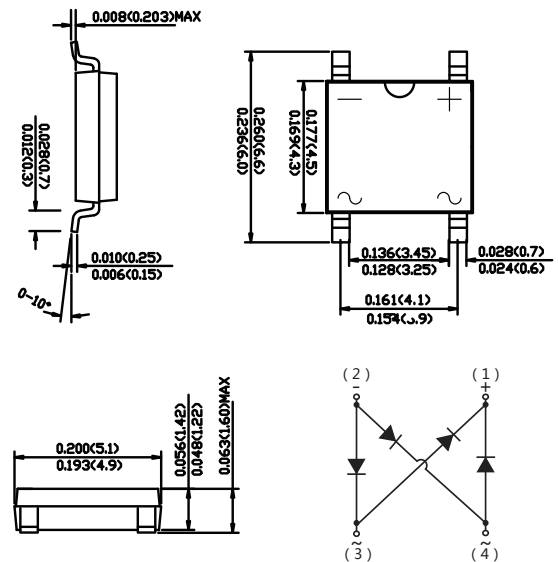
Mechanical Data

Case : JEDEC ABS Molded plastic body

Terminals : Solder plated, solderable per MIL-STD-750, Method 2026

Polarity : Polarity symbol marking on body

Mounting Position : Any



Dimensions in inches and (millimeters)

Maximum Ratings And Electrical Characteristics

Ratings at 25°C ambient temperature unless otherwise specified.

Single phase half-wave 60Hz, resistive or inductive load, for capacitive load current derate by 20%.

Parameter	SYMBOLS	AB24S	AB26S	AB28S	AB210S	AB220S	UNITS
Marking Code		MDD AB24S	MDD AB26S	MDD AB28S	MDD AB210S	MDD AB220S	
Maximum repetitive peak reverse voltage	V _{RRM}	40	60	80	100	200	V
Maximum RMS voltage	V _{RMS}	28	42	56	70	140	V
Maximum DC blocking voltage	V _{DC}	40	60	80	100	200	V
Maximum average forward rectified current	I _{F(AV)}	2.0					A
Peak forward surge current, 8.3ms single half sine-wave superimposed on rated load (JEDEC Method)	I _{FSM}	50		40			A
Maximum instantaneous forward voltage drop per leg at 2A	V _F	0.55	0.70	0.85			V
Maximum DC reverse current at rated DC blocking voltage T _A =25°C T _A =100°C	I _R	0.5 10			0.3 5		mA mA
Typical thermal resistance	R _{θJA}	70					°C/W
Typical junction capacitance	C _j	220	80				pF
Operating temperature range	T _J	-55 to +125					°C
storage temperature range	T _{STG}	-55 to +150					°C

NOTE: 1. Measured at 1MHz and applied reverse voltage of 4 V D.C.

2. Mounted on glass epoxy P.C. board with 4 X (5X5mm) copper pad.



AB24S THRU AB220S

Voltage Range - 40 to 200 V olts Current - 2.0 Ampere

Ratings And Characteristic Curves

Fig.1 Forward Current Derating Curve

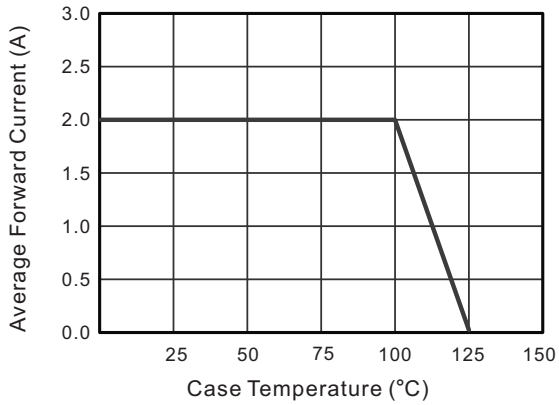


Fig.2 Typical Reverse Characteristics

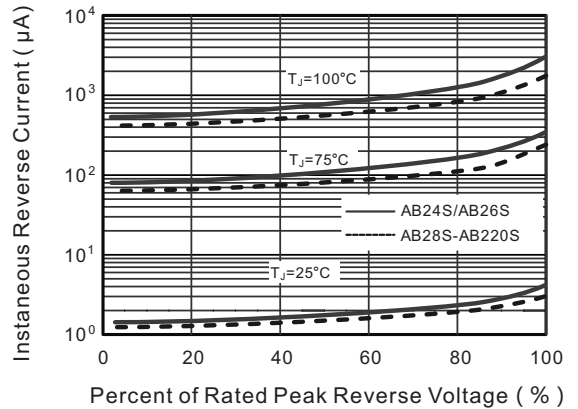


Fig.3 Typical Forward Characteristic

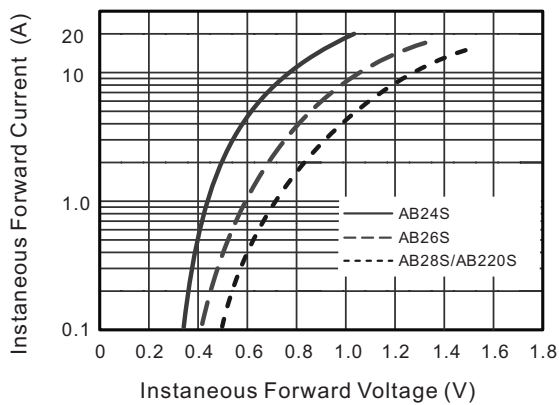


Fig.4 Typical Junction Capacitance

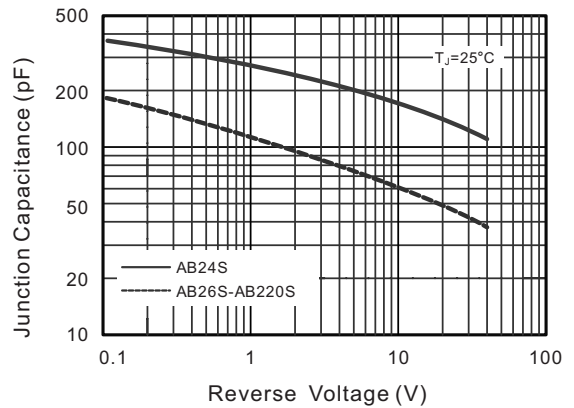
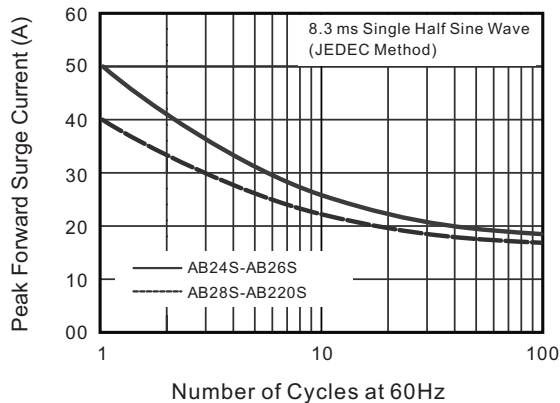
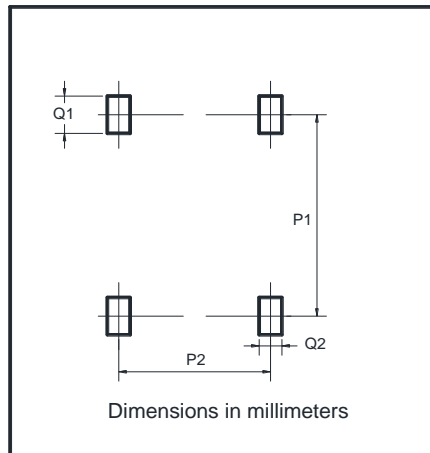


Fig.5 Maximum Non-Repetitive Peak Forward Surge Current



The curve above is for reference only.

Suggested Pad Layout



Dim	Min
P1	5.72
P2	4.00
Q1	1.00
Q2	0.90

Important Notice and Disclaimer

Microdiode Electronics (Jiangsu) reserves the right to make changes to this document and its products and specifications at any time without notice. Customers should obtain and confirm the latest product information and specifications before final design, purchase or use.

Microdiode Electronics (Jiangsu) makes no warranty, representation or guarantee regarding the suitability of its products for any particular purpose, nor does Microdiode Electronics (Jiangsu) assume any liability for application assistance or customer product design. Microdiode Electronics (Jiangsu) does not warrant or accept any liability with products which are purchased or used for any unintended or unauthorized application.

No license is granted by implication or otherwise under any intellectual property rights of Microdiode Electronics (Jiangsu).

Microdiode Electronics (Jiangsu) products are not authorized for use as critical components in life support