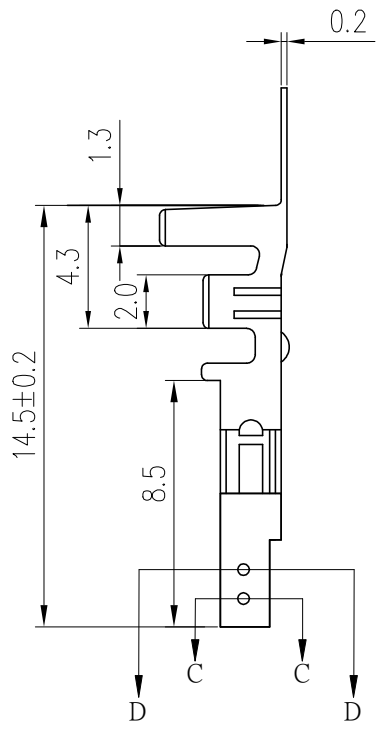
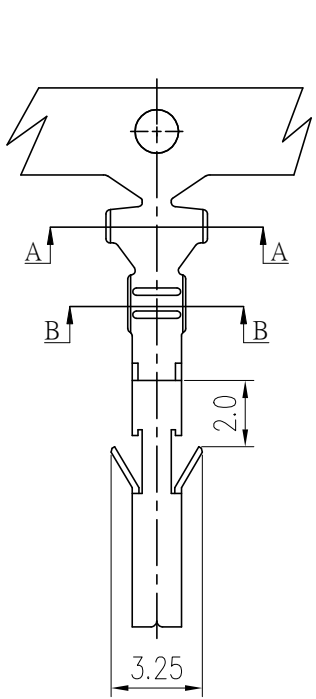


PRODUCT NUMBER  
SEE PART NO. TABLE



- NOTES:  
 1. MATERIAL: OPTIONAL.  
 2. THIS TERMINAL IS USED WITH FCI RECEPTACLE HSG 10127815.  
 3. PRODUCT SPECIFICATION: GS-12-1181.  
 4. PACKAGE SPECIFICATION: GS-14-2362.  
 5. PART NUMBER SCHEME:  
 10127817- X X X X LF

PLATING TYPE:  
 P: PRE-PLATED  
 BLANK: POST-PLATED

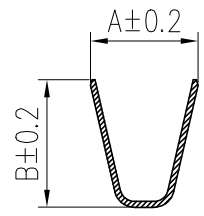
APPLICABLE AWG:  
 1: AWG #16~#22  
 2: AWG #24~#28

PLATING CODE:  
 1: GOLD FLASH  
 2: TIN  
 4: 30u" GOLD PLATING

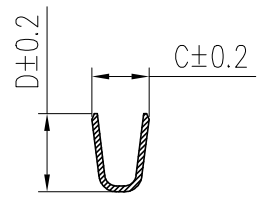
MATERIAL CODE:  
 1: PHOSPHORUS BRONZE  
 2: BRASS

6. DIMENSIONAL & PART NO. TABLE:

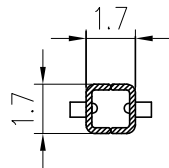
PART NO.	A	B	C	D	APPLICABLE WIRES
10127817-XX2XLF	3.2	3.4	1.8	2.2	#24~#28
10127817-XX1XLF	3.7	4.5	1.8	2.7	#18~#22



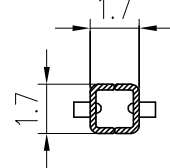
SEC A-A



SEC B-B



SEC C-C



SEC D-D

mat'l. code				surface ISO 1302 ✓		tolerance ISO 406 ISO 1101		projection 1101		product family WTB	
ltr	ecn no	dr	date	tolerances unless otherwise specified		angles linear		mm		title	
A		TAI	2013-11-11			.0±.40		mm		RECEPTACLE TERMINAL FOR	
B	ELX-T-17193	TAI	2014-03-12			.00±.30		mm		MINITEK PWR4.2 WIRE CONNECTOR	
C	ELX-T-18006	TAI	2014-06-19	0'±x'				scale 1:1		dwg no	
D	ELX-N-29382	TONY	2018-02-22	dr	KENNY TAI	2013-11-11			sheet 1 of 1		size
E	ELX-N-32022	TONY	2018-11-29	eng	KENNY TAI	2013-11-11			10127817		A3
				chr	KENNY TAI	2013-11-11			Amphenol FCI		
				app	PM ZHENG	2013-11-11			type		Product Customer Drawing
sheet index	revision	E									
	sheet	1									

Amphenol FCI

© 2016 AFCI